



HIGH HOPES

A penthouse apartment in central London was completely overhauled with the aim of maximising views and giving it the grandeur it deserves

Report: Felicity Borthwick Photography: Adrian Lyon



Opening pages (p146-147) and right: "It's crucial to have the right lighting in every room. For example, with a vanity unit, you need to have the light in front of you rather than above," explains Stephen. "What's more, these spots I've used illuminate the room but also create dramatic shadows on the textured limestone."

Opposite page: To create a cleaner, more luxurious look in the master bathroom, the shower features a frameless glass screen and single slab of stone for the tray. Moreover, the tiles on the floor are fashioned from the same limestone and have been cut to a bespoke size to ensure there are no little cuts around the edge of the room.



With sweeping vistas of the Thames and a clear view across to The Houses of Parliament, the location of Henry and Antonia Mayhew's apartment is truly spectacular. Thus it was a shame, they felt, that when you walked into the entrance hall, you found yourself in such a dark space with no views or sense of where you were. Moreover, the fixtures and fittings weren't at all suited to a multi-million-pound penthouse, so they decided to completely reconfigure and redesign it, enlisting the services of Stephen Dick from Residence Interior Design who executed their brief beautifully.

The hallway, along with various other rooms, now enjoys plenty of natural light and river views, while everything from the dining table to the door knobs are suitably luxurious for such a magnificent setting. Here Stephen tells us more about the project.

Tell us about the design of the guest bedroom and bathroom.

The whole area was much more compartmentalised before so I opened it up to create one large, open-plan space and to make the most of the ceilings, which are 4.5 metres high. I also wanted to create richness, but in a subtle way, which is why I opted for the timber wallcovering behind the bed. It features little diamonds of timber veneer, which have a gold finish, and also a neutral yet decorative resin on the front of the vanity unit and wardrobes.

The bathroom lights are beautiful. What inspired you to use them?

With such a large volume of space I wanted to incorporate some lighting in the centre of the room that had a relationship with the freestanding bath. However, you can't do this with conventional lighting because of the associated dangers, so these are fibre-optic lights driven by a projector that's hidden in a void space elsewhere. The effect is like orbs of light almost floating in the room and they can change colour too.

What was the concept for the master bathroom?

Simplicity is one of the most important things in a master bathroom as it's where you start and end the day, so it has to be a relaxing space. However, this doesn't mean boring or minimal – there's a lot of richness and interesting contrast and texture with the rough sandstone alongside slabs of honed limestone and then the high-gloss macassar ebony unit with crisp white Corian. That said, when you start using interesting textures you need to go through a process of reduction to create that simplicity. So the drawers are all handleless, the brassware is sleek and the shower is very simple; it's fashioned from slabs of stone – even the tray, which features a tiny waste slot along the back. Plus there are no visible means of support in the glass screen.

Why did you elevate the bath?

The building is all on concrete slabs so on a practical level it needed to be raised to create space for the drainage. However, it is also elevated in such a way that it becomes a fantastic focal point and allows for a better view – you can see the Shard from the bathtub. The steps also prevent the room from looking too tunnel-like as it's quite long and narrow.

How did you decide on finishes for the kitchen?

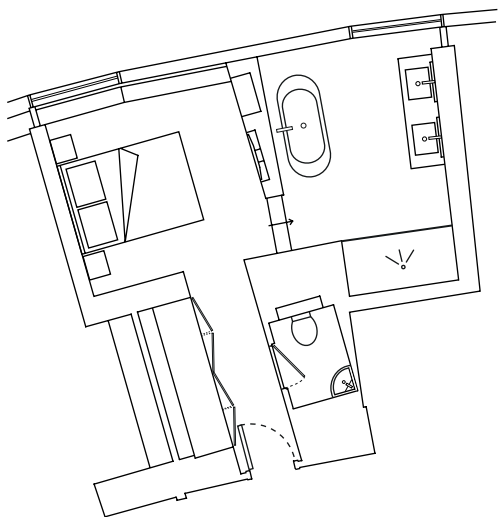
A lot of the units were still in good condition but dated by the appliances and wooden worktops so we kept the cabinetry and then replaced the worktops with Corian to create a much slicker, more modern look. For the appliances we chose high-end models such as a Gaggenau wine storage unit and Elica extractor. I also designed this illuminated onyx bar at the end, which has been sandwiched between toughened glass and lit by LED strips underneath; these are behind diffusers to create a really soft blanket of light. KBB

Right: The copper bathtub tones in beautifully with the lustrous bedroom wall, which features a golden timber wallcovering from American company Maya Romanoff. The fibre-optic lights above the bath also add a glamorous touch whilst accentuating the room's high ceiling.

Below: The guest bedroom is accessed through a dressing area with wooden wardrobes on one side and a mirrored wall on the other, which features a hidden door leading into a WC room. Being such an open-plan design, Stephen thought it best to keep the toilet separate.



Above and below: A bespoke wenge cabinet runs across the middle of the space to create a divide between the bedroom and bathroom whilst also creating an area for the TV. It features a display area with hidden lighting, lending the shelf a lovely glow, whilst the other side creates a backdrop for the freestanding bath.





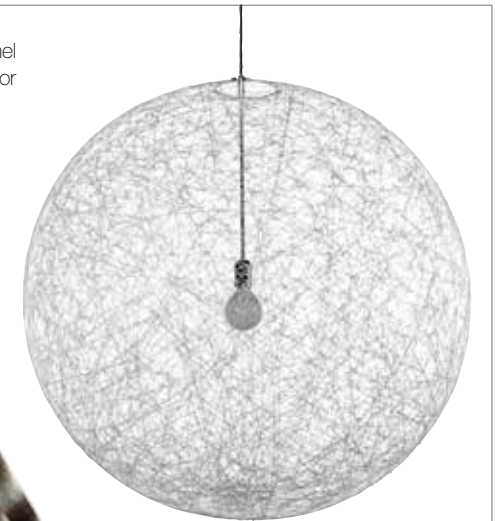
Right: Stephen replaced the existing bar with this striking design made from Honey onyx encased in glass, as he explains. "It wasn't the cheapest thing to do, but it looks really stunning. It's lit by LED strips underneath, which are behind diffusers, so you just get this glowing piece of stone."

Opposite page: Seamless Corian worktops give the kitchen a much cleaner, more contemporary look. The couple's piano, meanwhile, has been placed in the adjoining living area to capitalise on the breathtaking views of the capital.



GET THE LOOK

Below: Bateau bath with Stanneus exterior and white enamel interior from William Holland, priced £4950. (01305 251930 or www.williamholland.com)



Above: Moooi Random Lights from Occa-Home, priced £405. (0844 879 4258 or www.occa-home.co.uk)



Left: Glass Fjord Blue tiles from Walls and Floors, priced £91.45 per sq m. (01536 314730 or www.wallsandfloors.co.uk)

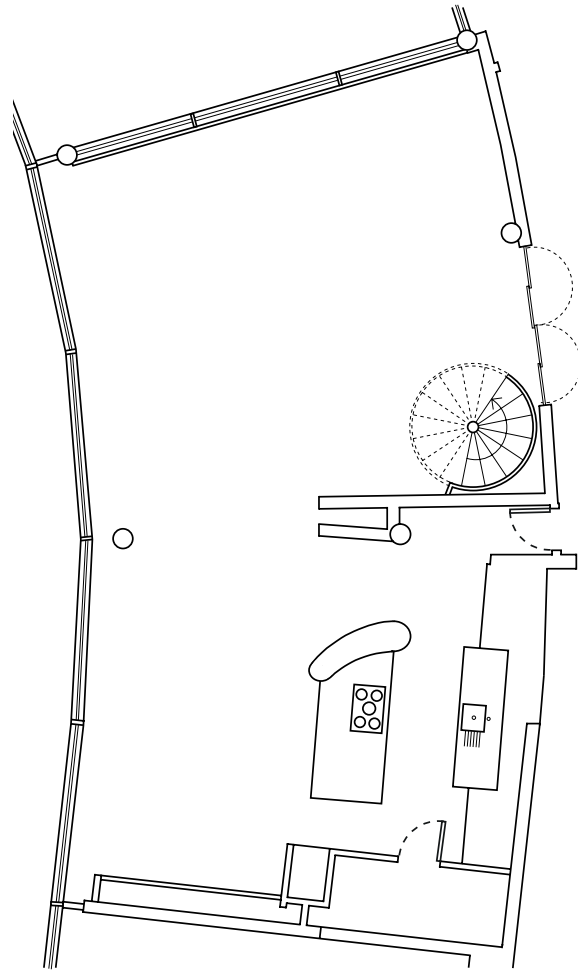


Right: Dombracht Symetrics shower valve from Dombracht, priced from £220. (024 7671 7129 or www.dombracht.com)



Left: Luxury faux fur throw from Faux Fur Throws, priced £166.50. (0845 226 8232 or www.fauxfurthrows.com)

Right: Stephen kept the existing cabinetry as it was still in good shape but upgraded the overall look with new worktops, high-end appliances and a striking onyx bar, giving the kitchen a luxurious feel that's much more in keeping with the property.



SourceBook

DESIGN

Interior design Stephen Dick of Residence Interior Design (01730 829566 or www.residenceinteriordesign.com)

MASTER BATHROOM

Bath Alessi One whirlpool bathtub from Laufen (01530 510007 or www.uk.laufen.com)

Shower enclosure Bespoke design by Residence Interior Design, as before, with glass screen by SSI (020 8997 7888 or www.ssionline.co.uk)

Flooring Vratza limestone from Stone Age (020 7384 9090 or www.stone-age.co.uk)

Walls Sandstone Mint from Island Stone (0800 083 9351 or www.islandstone.co.uk) and Honed Vratza limestone slab from Stone Age, as before

Vanity unit High-gloss macassar ebony unit with Corian basins and worktop, bespoke design by Residence Interior Design, as before, manufactured by Cimitree (01730 826809 or www.cimitree.co.uk)

Brassware Symetrics from Dornbracht (024 7671 7129 or www.dornbracht.com)

Towel rail CN007 with bespoke size and fixings from Vogue UK (01902 387000 or www.vogueuk.co.uk)

WC C+ from Catalano (www.catalano.co.uk)

Mirrors Royal Reflex illuminated wall mirrors from Keuco (01442 865220 or www.keuco.co.uk)

TV Aquavision (01992 708333 or www.aquavision.tv)

GUEST BATHROOM

Bath Handmade copper bateau bathtub with enamel and hand-tinned finish from William Holland (01305 251930 or www.williamholland.com)

Vanity unit Bespoke design by Residence Interior Design, as before, manufactured by Cimitree, as before. Resin finish by Kinon (www.kinon.com) with worktop made from Zodiaq (0800 962116 or www.dupont.co.uk)

Shower enclosure Bespoke design by Residence Interior Design, as before, with glass screen by SSI, as before

Brassware Symetrics from Dornbracht, as before

Walls Stoneworks porcelain tiles from Reed Harris (020 7736 7511 or www.reedharris.co.uk) and Passion blue glass tiles from Everstone (0121 706 6456 www.everstoneuk.com)

Flooring Stoneworks porcelain tiles from Reed Harris, as before

Lights Laluna fibre-optic chandeliers from Crescent Lighting

(01635 878888 or www.crescent.co.uk)

Towel rail CN009 from Vogue UK, as before

Mirrors Royal Reflex illuminated wall mirrors from Keuco, as before

Roman blinds Diapason Chaudron fabric from Lelievre (020 7352 4798 or www.lelievre.eu)

GUEST BEDROOM

Bed For similar try Ikea (0845 358 3363 or www.ikea.co.uk)

Wall cladding Ajiro Diamond timber wallcovering by Maya Romanoff from Pierre Frey (020 7376 5599 or www.pierrefrey.com)

Flooring Amtico (0121 745 0800 or www.amtico.com)

Wall lights Bespoke library lights and shades by Besselink & Jones (020 7584 0343 or www.besselink.com)

Throw For similar try Cox & Cox (0844 858 0734 or www.coxandcox.co.uk)

Wenge unit Bespoke design by Residence Interior Design, as before, manufactured by Cimitree, as before

TV Aquavision, as before

Cupboard doors Wenge with Kinon inserts, as before, and bespoke polished stainless-steel handles, bespoke design by Residence Interior Design, as before, manufactured by Cimitree, as before

KITCHEN-DINING AREA

Cabinetry Stained oak and white gloss. For similar try Roundhouse

(020 7297 6220 or www.roundhousedesign.com)

Worktops and basin Corian (0800 962116 or www.corian.co.uk)

Tap Axor Citterio from Hansgrohe (01372 472001 or www.hansgrohe.co.uk)

Bar/countertop Honey onyx with LED illumination, bespoke design by Residence Interior Design, as before

Appliances Wine storage unit, oven and induction hob, Gaggenau (0844 892 8988 or www.gaggenau.com/gb); Extractor, Elica (01252 351111 or www.elica.co.uk); Oven, fridge-freezer and dishwasher, Miele (0845 365 6600 or www.miele.co.uk)

Barstools For similar try Stools Online (0161 792 6026 or www.stoolsonline.co.uk)

Flooring Amtico, as before and oak, Reeve Flooring (01553 776835 or www.reevewood.com)

Dining furniture For similar try Roomscape (07956 645492 or www.roomscape.net)

Light (above table) For similar try Christopher Wray (020 7013 0180 or www.christopherwray.com)

COST

A similar master bathroom would cost around £40,000 and a similar guest bedroom/bathroom around £60,000